

# Intelligent EV Charger 7kW AC ICSW7C



The ICSW7C is suitable for workplace, destination and home charging.

Designed with the installer in mind, installation time is extremely quick, on average only 30 minutes.

7.2kW fast AC charging.

Up to 30 miles charging range per hour.

Single phase 230VAC.

No earth rod required (on TN-C-S PME system).

3G/4G sim, ethernet and WiFi ready.

Built in current detection 30mA AC and 6mA DC.

RFID authentication.

2.8" LCD display.

True OCPP 1.6J protocols.

Automatic minor fault recovery with configurable manual reset for RCD & Earth fault.

Independent back plate design for easy first fix.

All in one solution.

iCS2.0 smart charging software compatible.

iCS2.0Lite included for smart phone configuration and app control.



Workplace



Destination



Home



No Earth Rod



Smartphone  
App



7KW



iCS2.0



Warranty 3  
years

Connect with us  
[@intelligentchargingsystems](mailto:@intelligentchargingsystems)



LinkedIn

Office  
for Zero  
Emission  
Vehicles

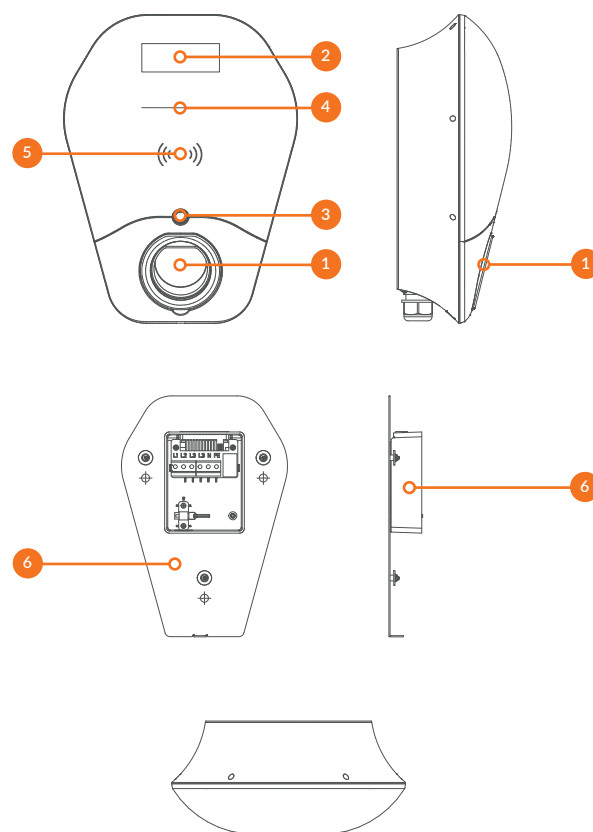


# Intelligent EV Charger 7kW AC ICSW7C



Specification	
<b>Power Input</b>	
Input Rating	230VAC + 20%, 32A
Frequency	50/60Hz
Standby Power	<5w
<b>Power Output</b>	
Output Rating	Single phase 7.2kw, 32A
<b>Protection</b>	
Over Current protection	Power output is terminated upon detection of overcurrent 10%
Internal Residual Current Detection	30mA AC & 6mA DC
Output Protection	Power output is terminated upon detection of charging connector plug-out
Electrical Protection	Over current, short circuit, over voltage, under voltage, ground fault, lightning surge, over temperature protection
Energy Meter	Meter IC
<b>Current Detection</b>	
PME	PME earth fault monitoring compliant with BS7671 regulation 722.411.4.1
<b>Function &amp; User Interface</b>	
Display	2.8" LCD display
Status Indicators	User Customizable
User Authentication	RFID reader (ISO/IEC 15693 and 14443A/B)
Buttons/Switches	Configurable physical button
Network Interface	Ethernet, 2.4G WiFi, 4G smart internet connection, hot spot mode
Charging protocol	Mode 3
<b>Environment</b>	
Operating temperature	-30°C to 50°C
Humidity	5% - 95% without condensation
Ingress Protection	IP55

Specification	
<b>Mechanical</b>	
Charging Interface	Type 2 socket (IEC 62196)
Mounting Type	Wall or Post (Post supplied separately)
Dimension (W x H x D)	269 x 360 x 146 mm
Net Weight	4.5kg
<b>Regulation &amp; Certification</b>	
Certificate	CE, IEC61851-1
OCPP	Full OCPP 1.6J support
<b>Accessories</b>	
RFID Card	ICS2.0UC
Floor Mount Post	ICSFP1, ICSFP2
EV Signage	ICSEVS1, ICSEVS2, ICSEVS2
EV Charging Cables	ICSL5S 7kw 5m type 2 to type 2



Connect with us  
@intelligentchargingsystems



LinkedIn

Email: [info@intelligentchargingsystems.co.uk](mailto:info@intelligentchargingsystems.co.uk)

[www.intelligentchargingsystems.co.uk](http://www.intelligentchargingsystems.co.uk)

ICS\_ICSW22C\_Data\_Sheet\_REV01

No	Item
1	Charging Socket
2	LCD Display Screen
3	Configurable Button
4	LED Indication
5	RFID Reader
6	First Fix Back Plate